

In sede di progettazione esecutiva sono state determinate, con riferimento ad ogni corpo e condotto, le aree oggetto di intervento al netto di quelle eventualmente occupate da impianti tecnologici, ricavate da Google Maps in quanto le coperture non sono accessibili a causa della mancanza di parapetti.

Si riporta di seguito un prospetto di sintesi dell'analisi effettuata.

Tabella 1 – Superfici oggetto di intervento – Corpi bassi

CORPI BASSI				
EDIFICIO	CORPO	SUPERFICIE TOTALE [m <sup>2</sup> ]	SUPERFICIE IMPIANTI [m <sup>2</sup> ]	SUPERFICIE INTERVENTO [m <sup>2</sup> ]
1	D	329	0	329
1	H	147	0	147
2	B	147	0	147
4	B	147	0	147
4	C	745	0	745
4	D	329	0	329
5	B	785	504	281
5	D	352	0	352
5	E	342	0	342
5	F	347	0	347
5	G	150	0	150
6	B	123	0	123
6	C	251	0	251
7	B	123	0	123
7	D	547	0	547
8	B	323	0	323
8	C	164	0	164
9	B	404	0	404
9	C	342	0	342
9	E	274	0	274
9	F	565	0	565
9	G	1045	0	1045
9	H	719	0	719
10	B	442	0	442
10	C	86	0	86
10	D	1534	270	1264
10	E	854	192	662
11	C	746	0	746
11	D	776	0	776
11	E	123	0	123
11	F	788	0	788
11	G	403	0	403

11	I	208	0	208
12	B	81	0	81
12	C	914	0	914
12	D	868	0	868
13	C	680	0	680
13	D	80	0	80
13	E	592	0	592
14	B	524	0	524
14	D	123	0	123
14	E	472	0	472
15	B	500	0	500
15	D	123	0	123
16	B	225	0	225
16	D	296	0	296
16	E	123	0	123
17	B	325	0	325
17	C	123	0	123
17	D	680	63	617
17	E	541	0	541
18	B	721	0	721
18	C	131	0	131
18	D	540	0	540
<b>TOTALI</b>		<b>26'240</b>	<b>1'029</b>	<b>25'211</b>

Tabella 2 – Superfici oggetto di intervento – Condotti di collegamento

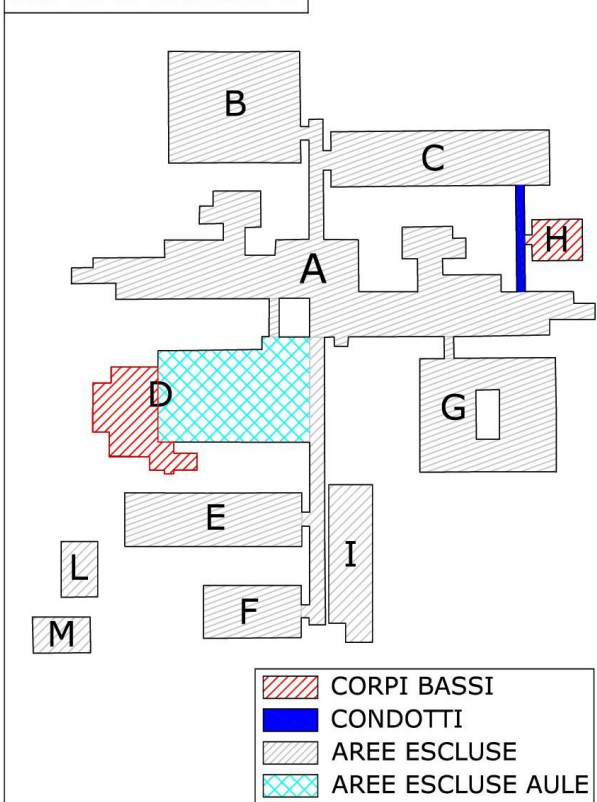
CONDOTTI DI COLLEGAMENTO				
EDIFICIO	DENOMINAZIONE	SUPERFICIE TOTALE [m <sup>2</sup> ]	SUPERFICIE IMPIANTI [m <sup>2</sup> ]	SUPERFICIE INTERVENTO [m <sup>2</sup> ]
1	A-C-H	51	0	51
2	B-C	10	0	10
4	A-C-D	285	0	285
4	B-C	10	0	10
5	D-E-F	125	0	125
5	A-G	10	0	10
6	A-B	10	0	10
6	A-C-D	77	0	77
7	A-B	9	0	9
7	A-C-D	118	0	118
8	A-C	15	0	15
9	B-C' PT/P1	179	0	179
9	B-C'' PT/P1	231	0	231

9	A-F	43	0	43
9	A-G-H	163	0	163
9	A-G P1	83	0	83
9	A-E	12	0	12
10	A-B	19	0	19
10	A-C	10	0	10
10	A-D-E	78	0	78
11	A-B-C-D-F-H	226	0	226
11	D-E	8	0	8
11	G-H-I	77	0	77
12	B-C	15	0	15
12	A-C	24	0	24
12	A-D PT/P1	172	0	172
13	A-C-E	75	0	75
13	C-D	15	0	15
14	A-B-C	77	0	77
14	A-D	17	0	17
15	A-B-C-ED.14	240	0	240
15	A-D	10	0	10
16	A-B	18	0	18
16	A-C-D-ED.14	142	0	142
16	A-E	19	0	19
17	A-B	64	0	64
17	A-C	11	0	11
17	A-D-E	71	0	71
18	A-B-D	69	0	69
18	B-C	12	0	12
18	A-B	18	0	18
<b>TOTALI</b>		<b>2'918</b>	<b>0</b>	<b>2'918</b>

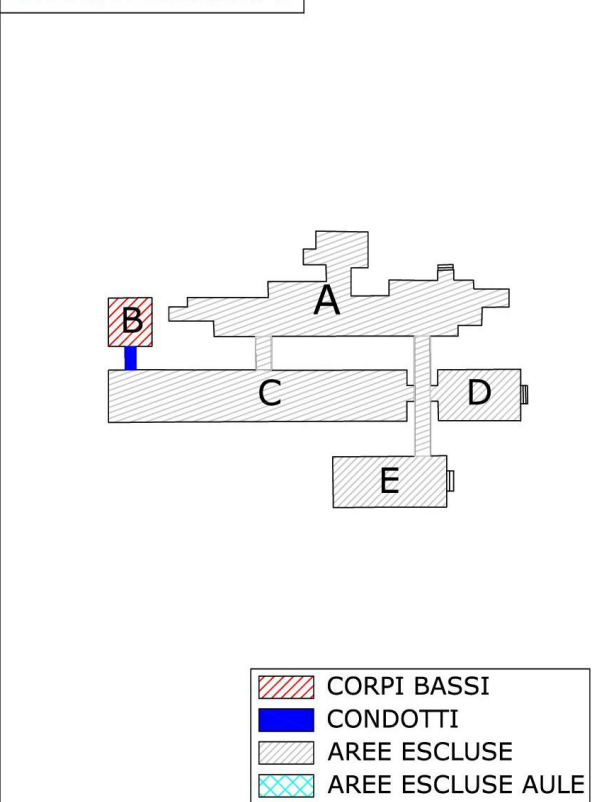
L'area complessiva di intervento, al netto delle superfici occupate da impianti, è pari a **28'129 m<sup>2</sup>**, di cui **22'293 m<sup>2</sup>** relativi ai corpi bassi e **2'918 m<sup>2</sup>** ai condotti di collegamento.

## KEY PLAN AREE OGGETTO DELL'INTERVENTO

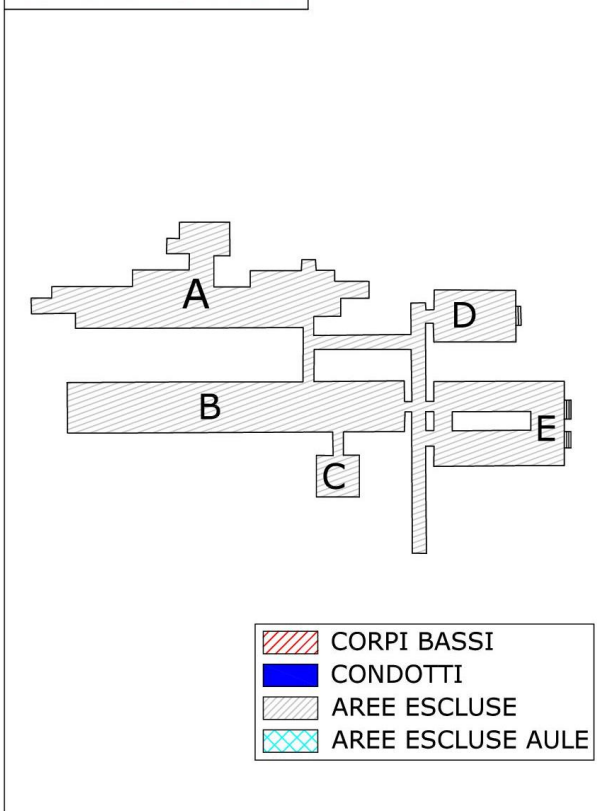
KEY PLAN EDIFICIO 1



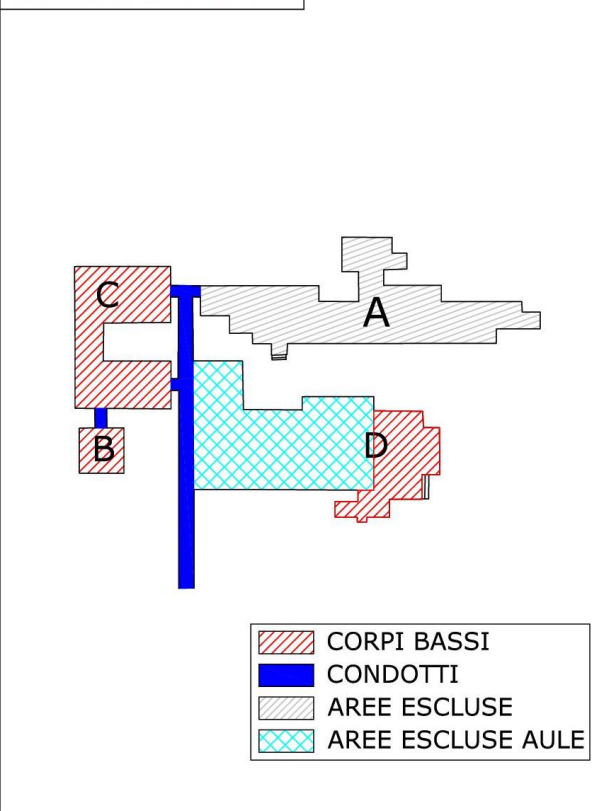
KEY PLAN EDIFICIO 2



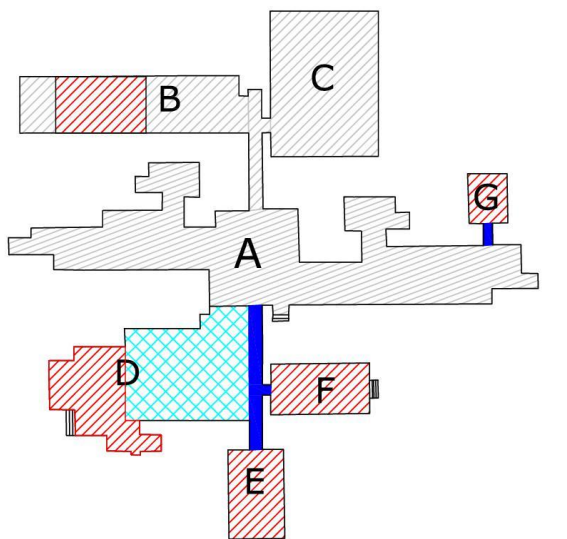
KEY PLAN EDIFICIO 3







KEY PLAN EDIFICIO 4

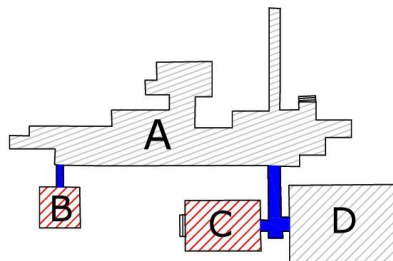






KEY PLAN EDIFICIO 5



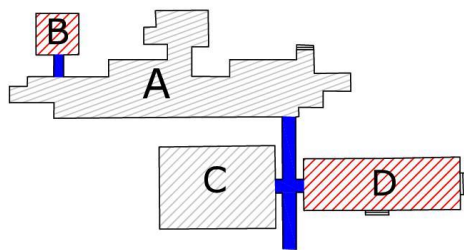
-  CORPI BASSI
-  CONDOTTI
-  AREE ESCLUSE
-  AREE ESCLUSE AULE


KEY PLAN EDIFICIO 6



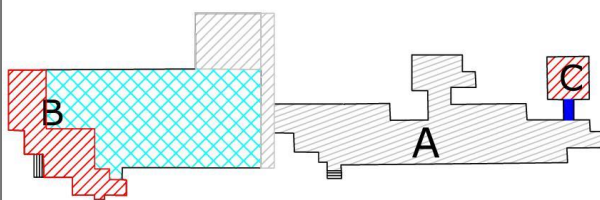
-  CORPI BASSI
-  CONDOTTI
-  AREE ESCLUSE
-  AREE ESCLUSE AULE





KEY PLAN EDIFICIO 7



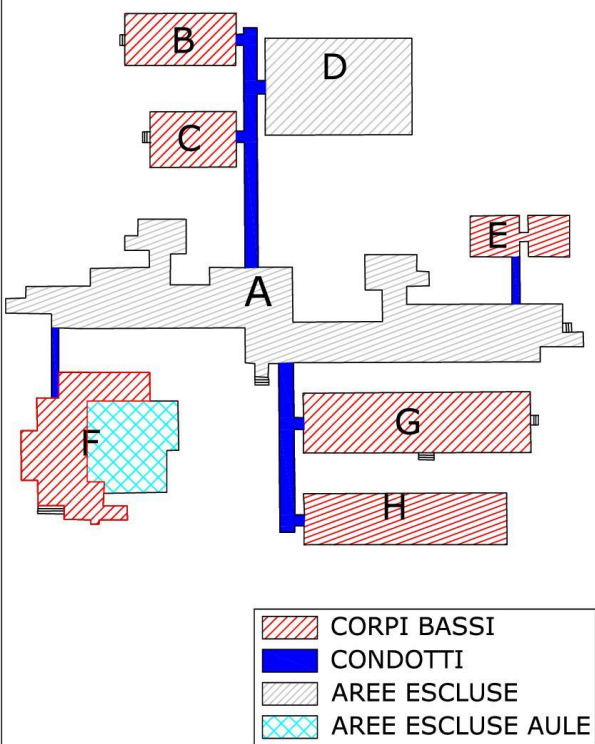
-  CORPI BASSI
-  CONDOTTI
-  AREE ESCLUSE
-  AREE ESCLUSE AULE

KEY PLAN EDIFICIO 8

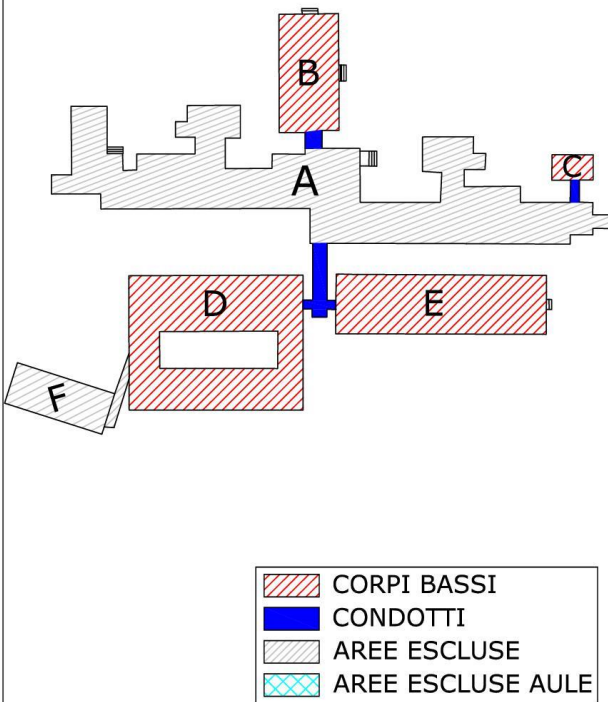


-  CORPI BASSI
-  CONDOTTI
-  AREE ESCLUSE
-  AREE ESCLUSE AULE

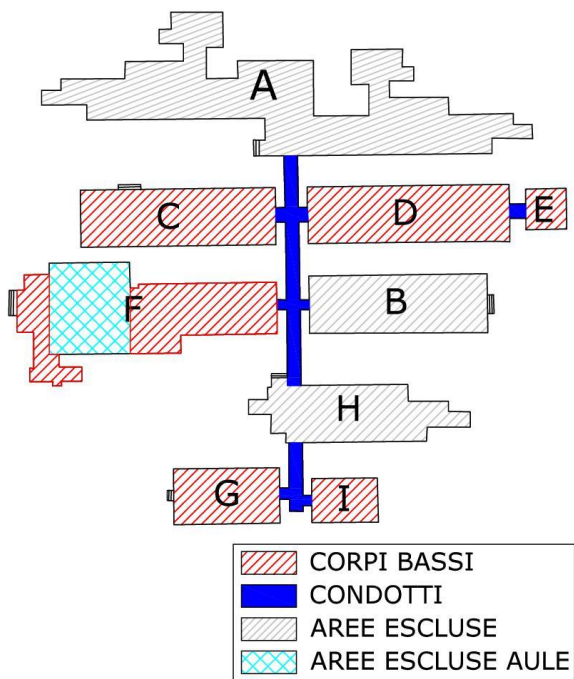
KEY PLAN EDIFICIO 9



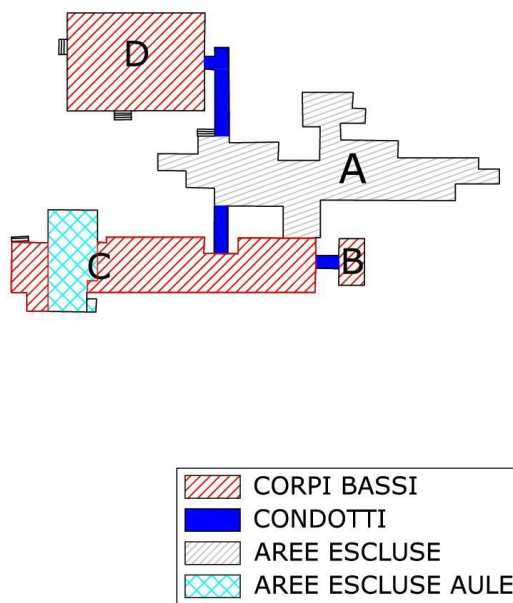
KEY PLAN EDIFICIO 10



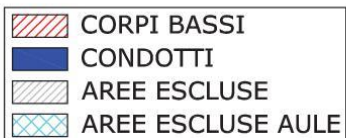
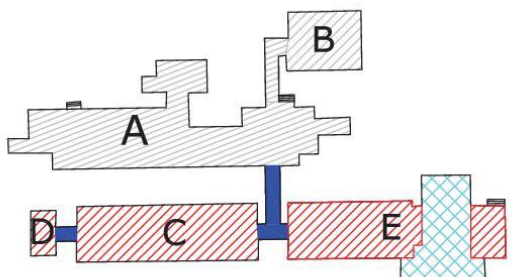
KEY PLAN EDIFICIO 11



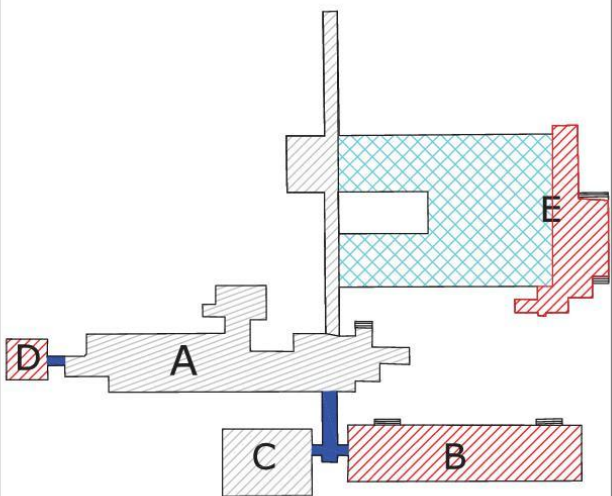
KEY PLAN EDIFICIO 12



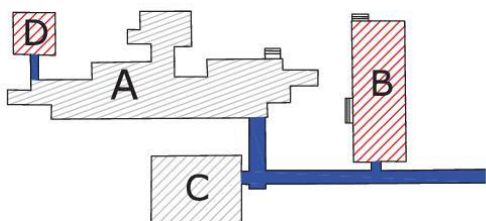
KEY PLAN EDIFICIO 13



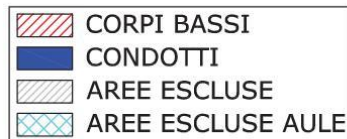
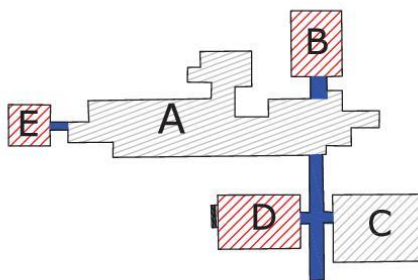
KEY PLAN EDIFICIO 14



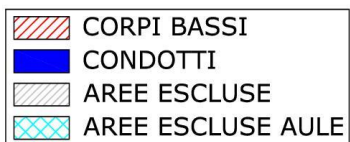
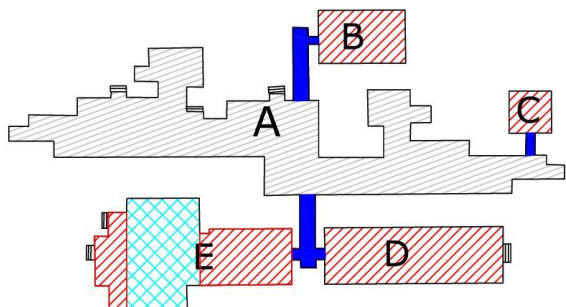
KEY PLAN EDIFICIO 15



KEY PLAN EDIFICIO 16



KEY PLAN EDIFICIO 17



KEY PLAN EDIFICIO 18

